

Name: _____

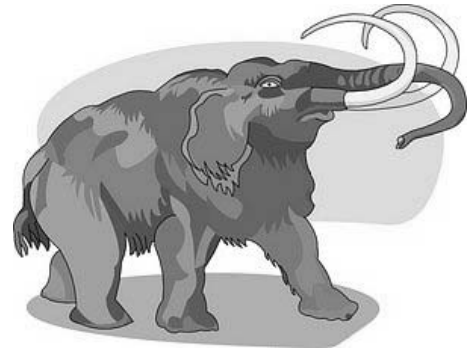
Date: _____

Class: _____

Teacher: _____

Comparing Fractions

Complete the Activity. Identify whether a fraction is smaller (<), larger (>) or equal (=)



① $\frac{2}{7}$ $\frac{1}{5}$

② $\frac{2}{4}$ $\frac{2}{6}$

③ $\frac{1}{8}$ $\frac{1}{4}$

④ $\frac{2}{3}$ $\frac{2}{3}$

⑤ $\frac{5}{6}$ $\frac{1}{3}$

⑥ $\frac{4}{7}$ $\frac{1}{2}$

⑦ $\frac{1}{7}$ $\frac{4}{5}$

⑧ $\frac{3}{8}$ $\frac{4}{8}$

⑨ $\frac{1}{2}$ $\frac{5}{8}$

⑩ $\frac{4}{5}$ $\frac{3}{5}$