

Name: _____

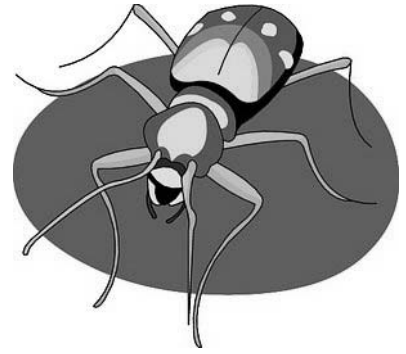
Date: _____

Class: _____

Teacher: _____

Comparing Fractions

Complete the Activity. Identify whether a fraction is smaller (<), larger (>) or equal (=)



① $3\frac{1}{9} \square \frac{23}{9}$

② $\frac{18}{27} \square \frac{19}{9}$

③ $\frac{2}{9} \square 5\frac{4}{9}$

④ $\frac{26}{9} \square \frac{2}{9}$

⑤ $3\frac{5}{9} \square 1\frac{8}{9}$

⑥ $\frac{22}{9} \square \frac{12}{9}$

⑦ $\frac{25}{9} \square \frac{15}{9}$

⑧ $\frac{18}{54} \square \frac{7}{9}$

⑨ $\frac{17}{9} \square \frac{12}{9}$

⑩ $\frac{20}{9} \square \frac{49}{63}$

⑪ $\frac{6}{9} \square \frac{11}{9}$

⑫ $\frac{5}{9} \square 5\frac{6}{9}$