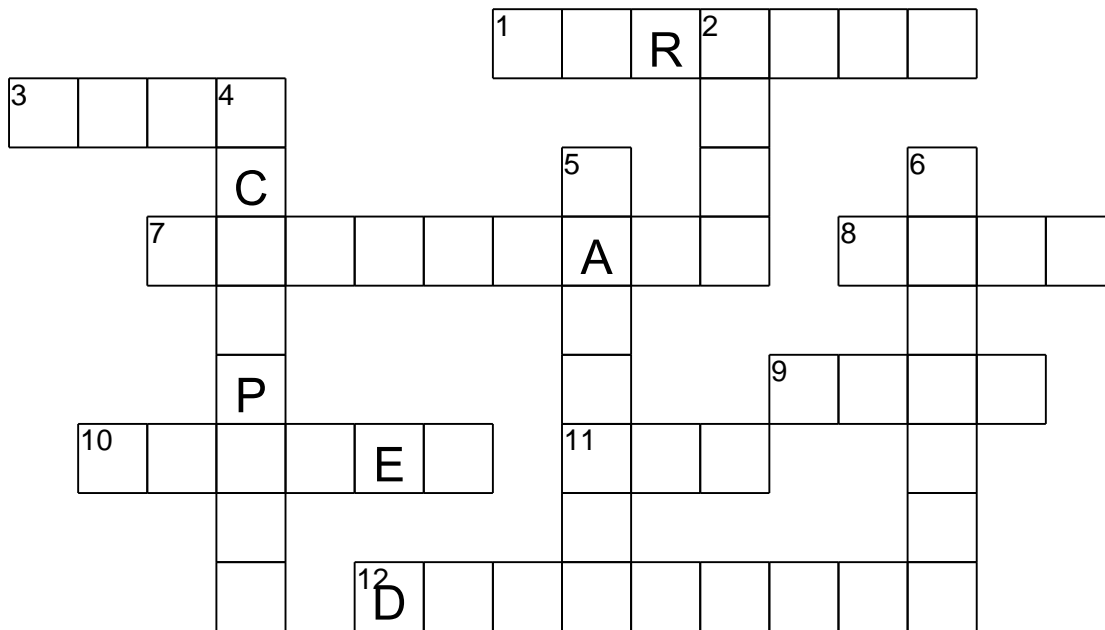
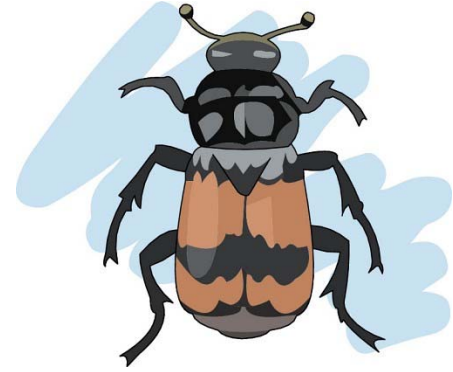


Name: _____ Date: _____
 Class: _____ Teacher: _____

BUGS CROSSWORD

Complete the activity.



ACROSS

1. Eats wood.
3. Are notorious for showing up at picnics.
7. May be found in the dark corners of your home late at night.
8. A small parasitic arachnid with barbed jaws that feeds on blood of warm-blooded animals.
9. Will make a dog itch.
10. Not considered an insect because it has eight legs.
11. It lives in a hive and makes honey.
12. A large, slender insect having shimmering wings that are spread out when it is resting. It feeds on other insects.

DOWN

2. Looks like a butterfly, but is not.
4. Arachnid of warm dry places that has a long tail ending in a venomous sting
5. Small, round, bright-colored and spotted beetle that usually feeds on aphids and other insect pests
6. A nocturnal beetle that has body parts that light up in the dark.