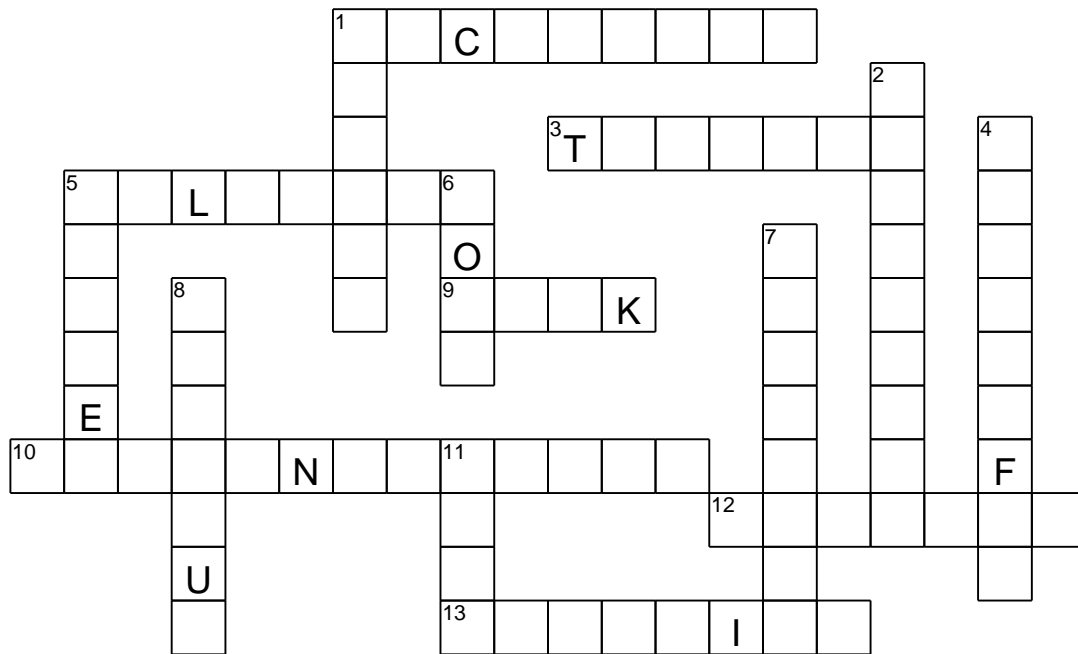
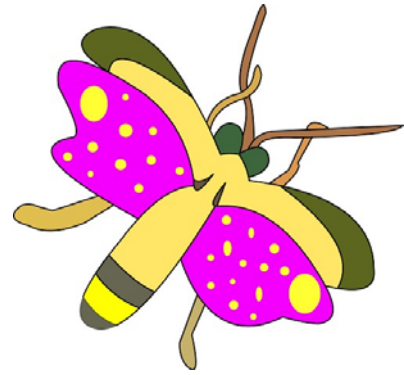


Name: _____ Date: _____
 Class: _____ Teacher: _____

BUGS CROSSWORD

Complete the activity.



ACROSS

1. May be found in the dark corners of your home late at night.
3. Eats wood.
5. Hairless white caterpillar what is the source of most commercial silk.
9. A small parasitic arachnid with barbed jaws that feeds on blood of warm-blooded animals.
10. Gets it's name because it looks like it's praying.
12. A nocturnal beetle that has body parts that light up in the dark.
13. Arachnid of warm dry places that has a long tail ending in a venomous sting

DOWN

1. A group of termites is known as this.
2. Arthropod having a flattened body of 15 to 173 segments.
4. A large, slender insect having shimmering wings that are spread out when it is resting. It feeds on other insects.
5. Not considered an insect because it has eight legs.
6. Looks like a butterfly, but is not.
7. Drinks your blood and leaves you feeling itchy.
8. Small, round, bright-colored and spotted beetle that usually feeds on aphids and other insect pests
11. Are notorious for showing up at picnics.